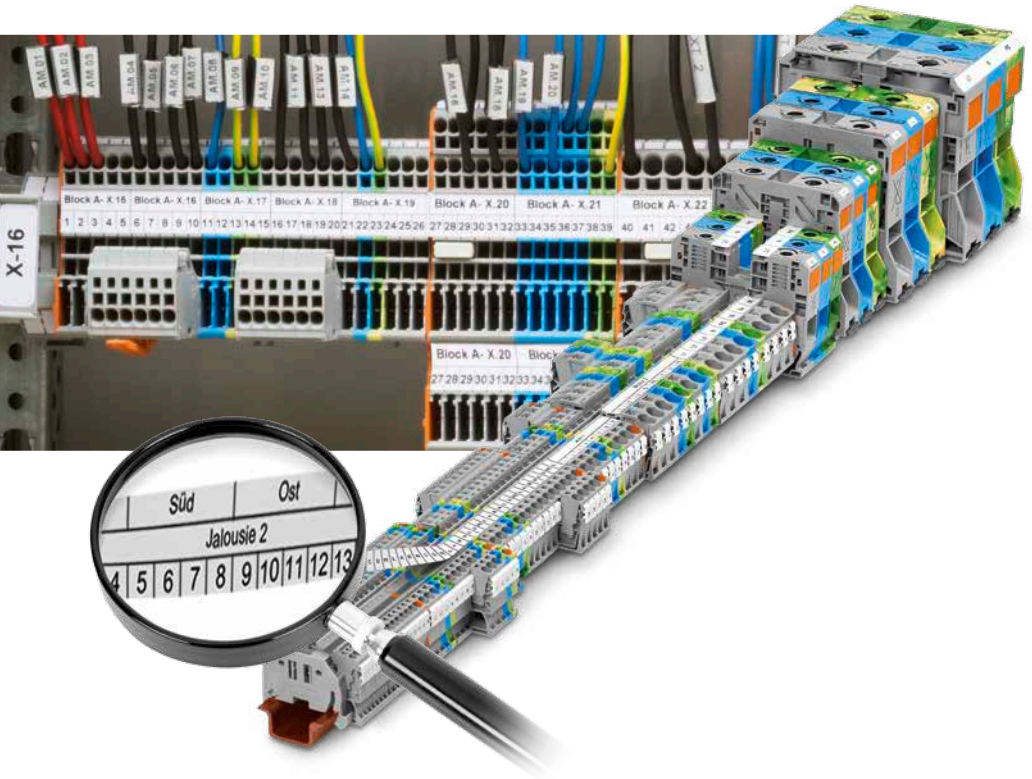


WAGO MARKING

Samples and Overview



THE INDUSTRY'S FASTEST AND MOST COST-EFFECTIVE MARKING SYSTEM

Marking materials, printers and software from WAGO are perfectly synchronized for seamless marking:

- Inline marker slots on DIN-rail-mount terminal blocks for fast marking via markers and marking strips
- Multi-line marking strips for clear, detailed control cabinet labels
- ProServe® Software, combined with the appropriate printer, simplifies custom marking
- Easy-to-separate inline markers for multi-level terminal blocks
- Professional DYMO 3M PL300 Mobile Printer for convenient, software-free marking of electrical installations
- Marking strips suitable for all TOPJOB® S DIN-rail-mount terminal blocks, as well as other select WAGO terminal blocks

CONTENTS

Marking Materials

Terminal Block Marking	4
Cable and Wire Marking	10
Device Marking	20

ProServe® – Professional Services

Designing · Ordering · Marking	38
--------------------------------	----

Printers

smart PRINTER, TP 298+, DYMO 3M PL300	40
--	----



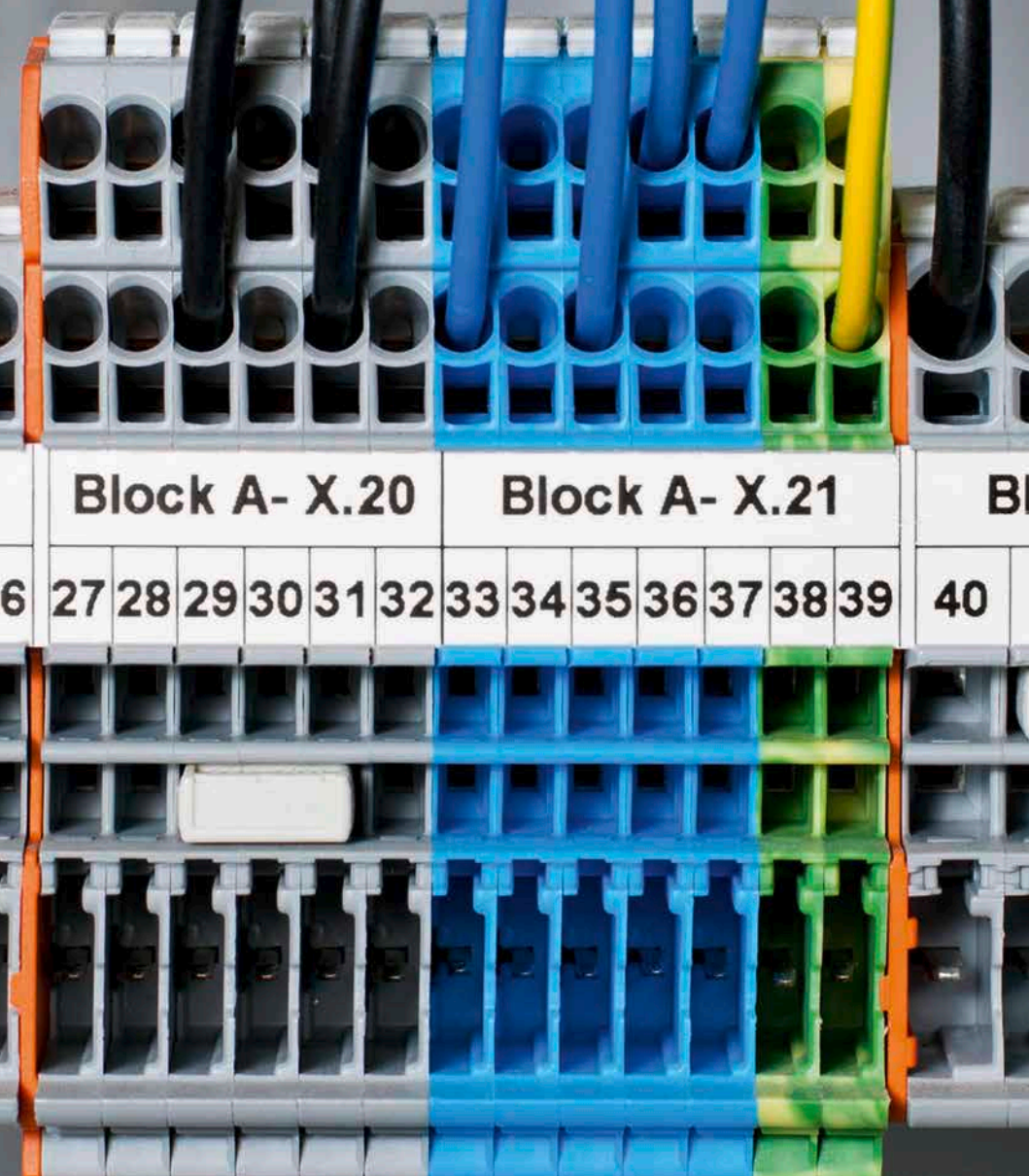
TERMINAL BLOCK MARKING

Clear marking is essential to helping ensure error-free wiring for greater safety and reliability.

WAGO offers several options for implementing the right marking solution at the right price. Clearly organize and label all control cabinet components using time-saving marking strips and WMB Inline markers.

WAGO provides multi-line marking for added convenience and greater detail that helps reduce installation errors. Continuous marking strips are supplied on rolls and can even be used on terminal blocks of different sizes.

WAGO-exclusive WMB Inline markers are connected to one another and can be applied to 4–4.2 mm and 5 mm or 5.2 mm wide terminal blocks. They can also be separated for wider terminal blocks. This versatility makes them the perfect fit for any terminal block width.



Block A- X.20

Block A- X.21

B

6 27 28 29 30 31 32 33 34 35 36 37 38 39 40

MARKING STRIPS

Muster 2009-110
126 x 10 mm

For **smart**PRINTER and TP 298+

Item No.	Width	Roll
709-177	7.5 mm, translucent	50 m
709-178	7.5 mm, white	50 m
757-901/000-050	10 mm, white	50 m
2009-110 (above)	11 mm, white	50 m



INLINE MARKERS

on a roll – WMB Inline and Mini-WSB Inline

Muster 2009-115
75 x 10 mm

Muster 2009-145, 75 x 5 mm

For **smart**PRINTER and TP 298+

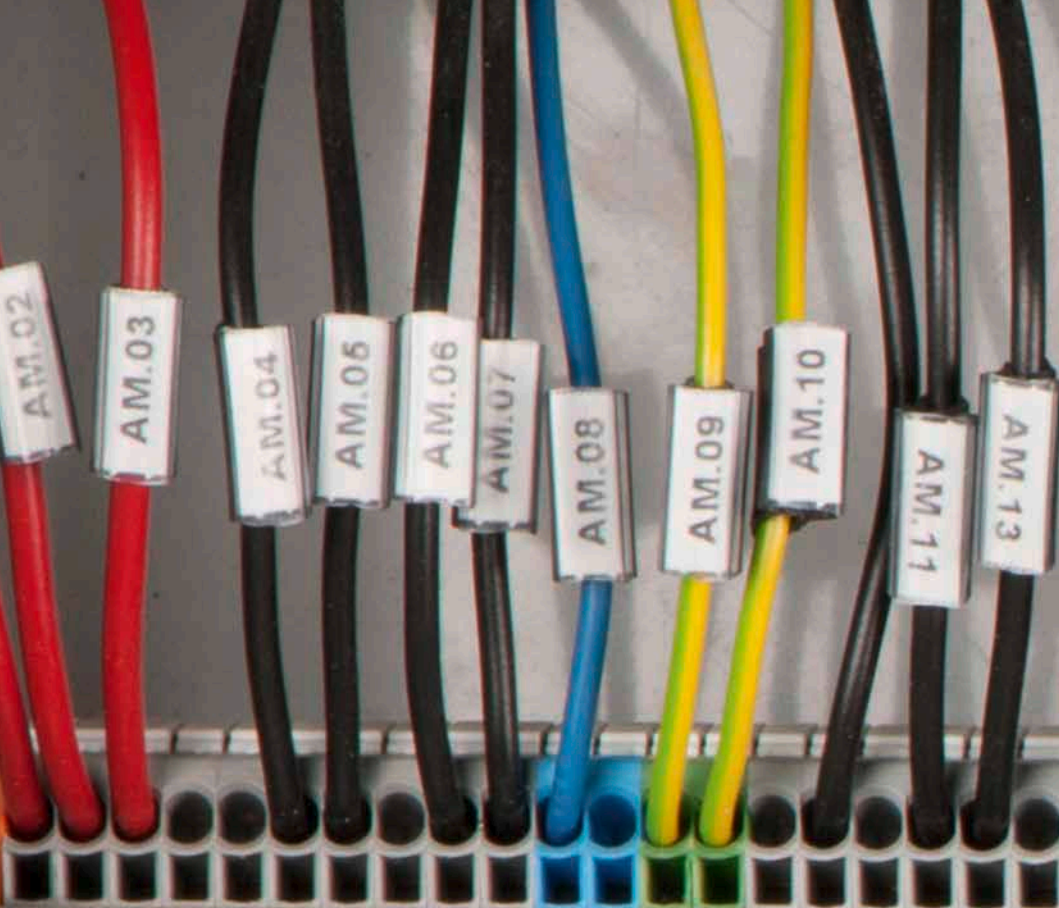
Item No.	Terminal Block Width	Roll
2009-114 WMB Inline	4.0–4.2 mm	2,000 pcs
2009-115 (WMB Inline, top sample)	5.0–5.2 mm	1,500 pcs
2009-145 (Mini-WSB Inline, bottom sample)	5.0–5.2 mm	1,700 pcs



CABLE AND WIRE MARKING

WAGO offers versatile marking options for cables and wires – even across the greatest variety of marking surface sizes!

The choice is yours: Whether you prefer marking sleeves, self-laminating labels or wire markers for thread-on mounting, WAGO has the right solution for marking any application.



Block A- X.15 Block A- X.16 Block A- X.17 Block A- X.18

1 2 3 4 5 6 7 8 9 10 11 12 13 14 15 16 17 18 19 20



MARKING SLEEVES

211-823
25 x 10 mm

For **smart**PRINTER and TP 298+, transparent sleeves

Item No.	Length	Wire Diameter	Suitable Markers
211-812	12 mm	1.4–5.0 mm	211-811, 12 x 4 mm
211-813	12 mm	5.0–11.0 mm	211-811, 12 x 4 mm
211-823 (sample)	23 mm	1.4–5.0 mm	211-821, 23 x 4 mm
211-824	23 mm	5.0–11.0 mm	211-821, 23 x 4 mm
211-829	23 mm	Secure using cable ties	211-821, 23 x 4 mm

For TP 298+, black sleeves

Item No.	Length	Wire Diameter	Suitable Markers
211-112	12 mm	1.6–3.2 mm	211-111, 12 x 4 mm
211-113	12 mm	2.2–4.5 mm	211-111, 12 x 4 mm
211-114	12 mm	3.7–5.9 mm	211-111, 12 x 4 mm
211-115	12 mm	5.5–10 mm	211-111, 12 x 4 mm
211-122	23 mm	1.6–3.2 mm	211-121, 23 x 4 mm
211-123	23 mm	2.2–4.5 mm	211-121, 23 x 4 mm
211-124	23 mm	3.7–5.9 mm	211-121, 23 x 4 mm
211-125	23 mm	5.5–10 mm	211-121, 23 x 4 mm

Gbd. X1-3.Etage
B110RX

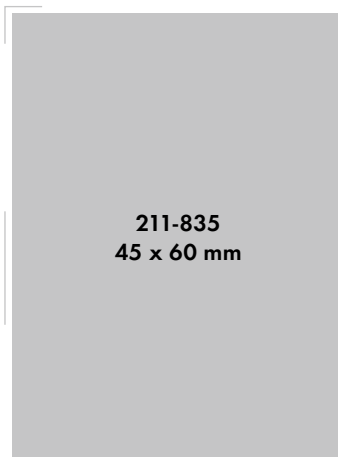
Gbd. X1-2.Etage
B110A

Gbd. X1-1.Etage
B110A

Gbd. X1-2.Etage
B110A



CABLE TIE MARKERS



For **smart**PRINTER and TP 298+

Item No.	Writable Surface
211-835 (sample)	25 x 10 mm, 1 line
211-836	100 x 15 mm, 2 lines
807-0090/0101-0100	Suitable cable tie

For TP 298+

211-135	25 x 10 mm, 2 lines
---------	---------------------

A.0001

A.0002

A.0003

A.0004

A.0005



SELF-LAMINATING LABELS

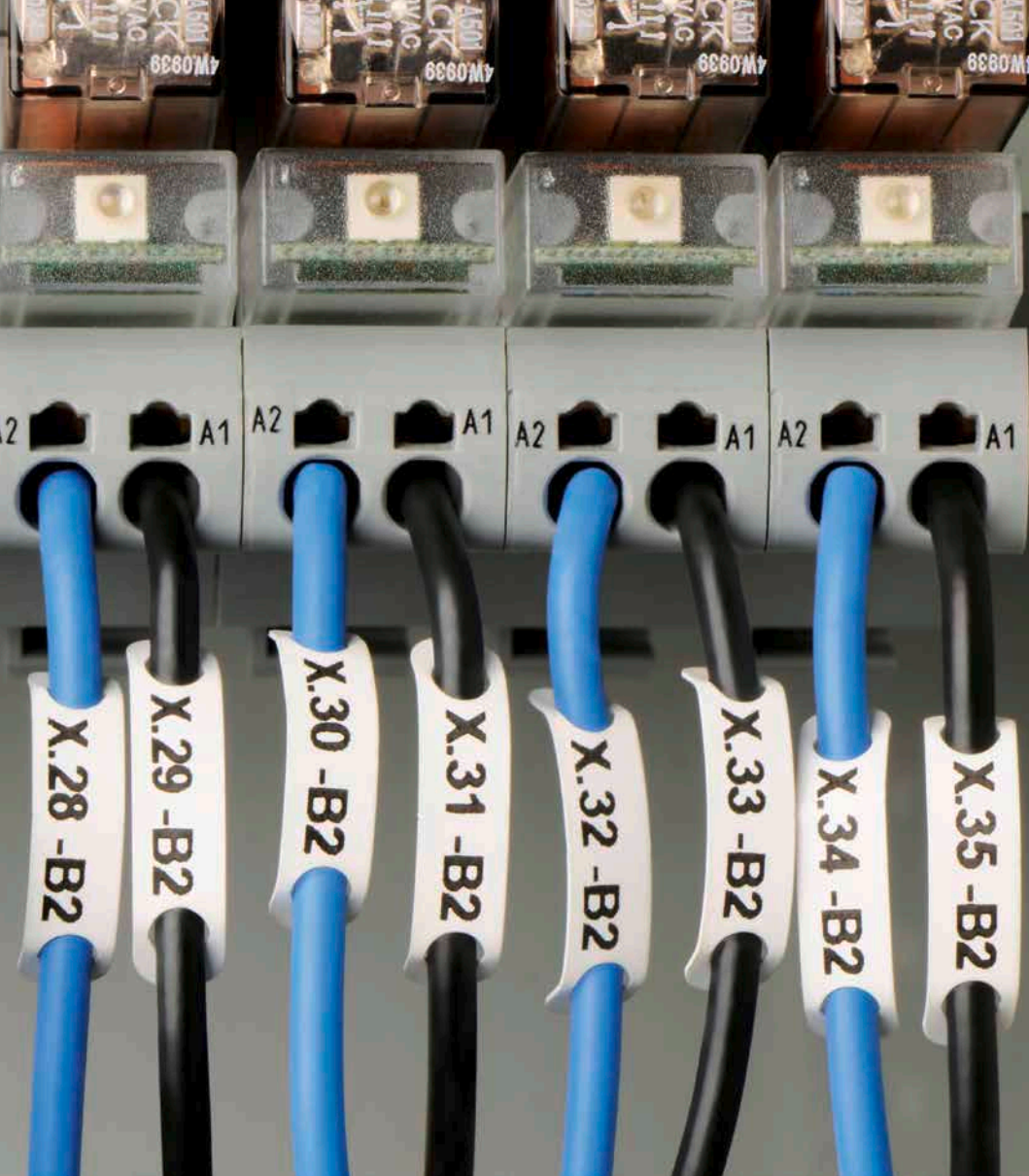


For **smart**PRINTER and TP 298+

Item No.	Writable Surface	Cable Diameter
211-855 (sample)	9 x 18 mm, 2 lines	max. 9 mm
211-856	15 x 22 mm, 2 lines	max. 12 mm
211-857	18 x 44 mm, 1 line	max. 22 mm

For TP 298+

211-155	8 x 18 mm, 5 lines	max. 9 mm
211-156	13 x 23 mm, 4 lines	max. 12 mm



X.28 -B2

X.29 -B2

X.30 -B2

X.31 -B2

X.32 -B2

X.33 -B2

X.34 -B2

X.35 -B2

A1

A1

A1

A1

A2

A2

A2

A2


A501
CK
VAG
4W0939

A501
CK
VAG
4W0939

A501
CK
VAG
4W0939

A501
CK
VAG
4W0939

WIRE MARKERS FOR THREAD-ON MOUNTING



211-862
69 x 45 mm

For *smart*PRINTER and TP 298+

Item No.	Writable Surface	Wire Marking
211-861	5 x 10.5 mm, 3 lines	0.75-1.5 mm ²
211-862 (sample)	7 x 10.5 mm, 3 lines	2.5-6.0 mm ²
211-863	10 x 17 mm, 2 lines	6.0-16 mm ²

For TP 298+

211-161	5 x 10.5 mm, 4 lines	0.75-1.5 mm ²
211-162	7 x 10.5 mm, 4 lines	2.5-6.0 mm ²


- BMK2	- BMK4	- BMK6	- BMK8	WAGO Kontakttec	Hansa	32423 Min
mbH & Co. KG	Label 44 x 99, color white	February 2013	210-803	Product	Date	IF
- 27 Minden	WAGO [®]					
duct						
Date						
D						

DEVICE MARKING

WAGO's broad selection of label types (e.g., printable fabric), push-button markers and type plates optimizes marking for devices and control cabinets.

Most labels can be conveniently printed directly from a roll. In addition, various colors and sizes are available, as well as frames, for push-button markers or plastic covers.

Take advantage of WAGO's free ProServe® Software to easily customize marking!



Block
A2-15 M

Block
A2-16 M

Block
A2-17 M

Block
A2-18 M

A2-19 M

A2-20 M

A2-21 M

A2-22 M

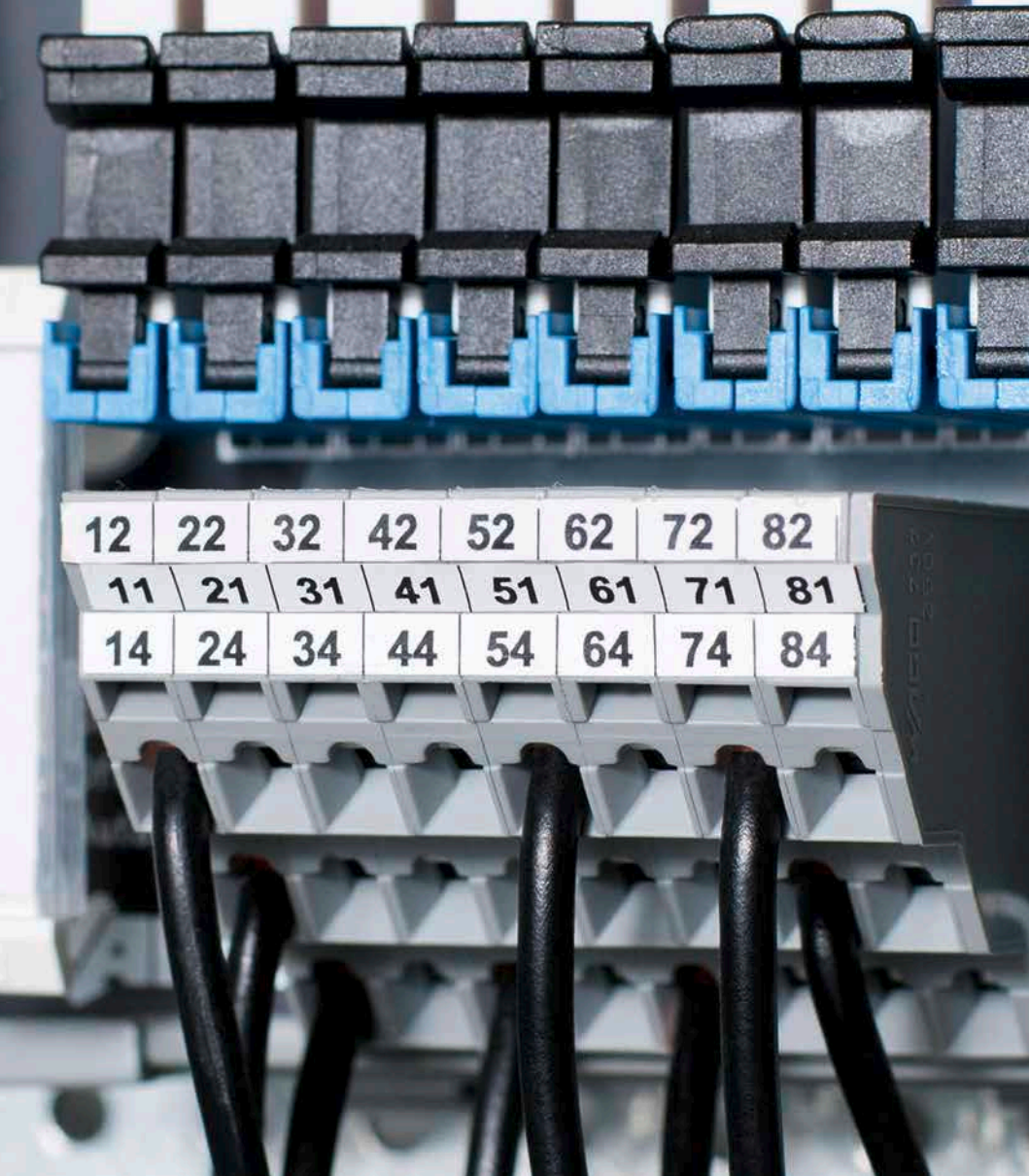
MARKING STRIPS

Self-Adhesive

210-702
91 x 10 mm

For **smart**PRINTER and TP 298+

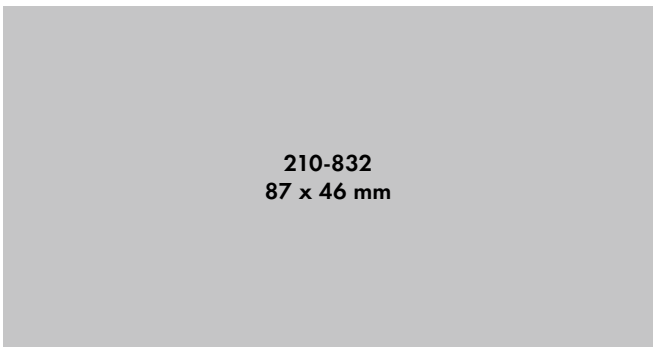
Item No.	Width	Roll
210-702	15 mm	50 m



12	22	32	42	52	62	72	82
11	21	31	41	51	61	71	81
14	24	34	44	54	64	74	84

CONTINUOUS LABELS

Self-Adhesive



210-832
87 x 46 mm

For *smart*PRINTER and TP 298+

Item No.	Width/Number of Strips	Roll
210-831	2.3 mm/9	25 m
210-832 (sample)	3.0 mm/9	25 m
210-833	6.0 mm/5	25 m
210-834	5.0 mm/5	25 m

For TP 298+

210-732	3.0 mm/12	25 m
---------	-----------	------



NC

NC

NO

DC
24V

NO

NC

NC

NO

21

31

43

A1+

13

21

31

43

3RH

22E

X.13

22E

X.14

G/970217

3RH1122-28B40

14

22

32

44

A2-

G/970217

3RH1122-28B40

14

22

32

NO

NC

NC

NO

NO

NC

NC

LABELS

Self-Adhesive

210-806/000-002
72 x 46 mm

For **smart**PRINTER and TP 298+

Item No.	Size	Roll
210-805	6 x 15 mm, white	3,000 pcs
210-805/000-002	6 x 15 mm, yellow	3,000 pcs
210-806	9 x 15 mm, white	3,000 pcs
210-806/000-002 (above)	9 x 15 mm, yellow	3,000 pcs
210-807	8 x 20 mm, white	3,000 pcs
210-807/000-002	8 x 20 mm, yellow	3,000 pcs

For TP 298+

210-705	6 x 15 mm, white	3,000 pcs
210-705/000-002	6 x 15 mm, yellow	3,000 pcs
210-706	9 x 15 mm, white	3,000 pcs
210-706/000-002	9 x 15 mm, yellow	3,000 pcs
210-707	8 x 20 mm, white	3,000 pcs
210-707/000-002	8 x 20 mm, yellow	3,000 pcs

- BMK1

- BMK3

- BMK5

- BMK7

- BMK9

- BMK1

- BMK3

- BMK5

- BMK4

- BMK6

- BMK10

- BMK2

- BMK8

- BMK6

- BMK9

FABRIC LABELS

Self-Adhesive



For **smart**PRINTER and TP 298+

Item No.	Size	Roll
210-811	7 x 20 mm, white	3,000 pcs
210-811/000-002 (above)	7 x 20 mm, yellow	3,000 pcs

X-15

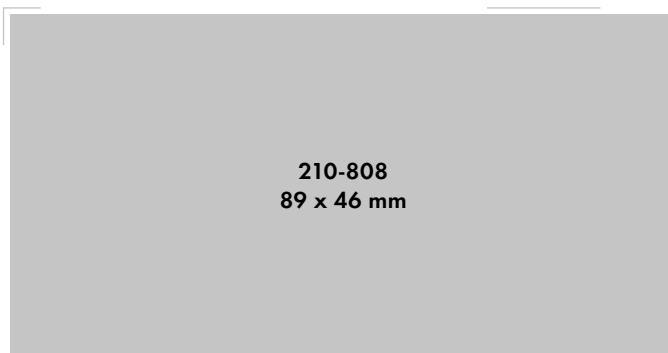
110

3. Etage C4

S-12

LABELS

Self-Adhesive

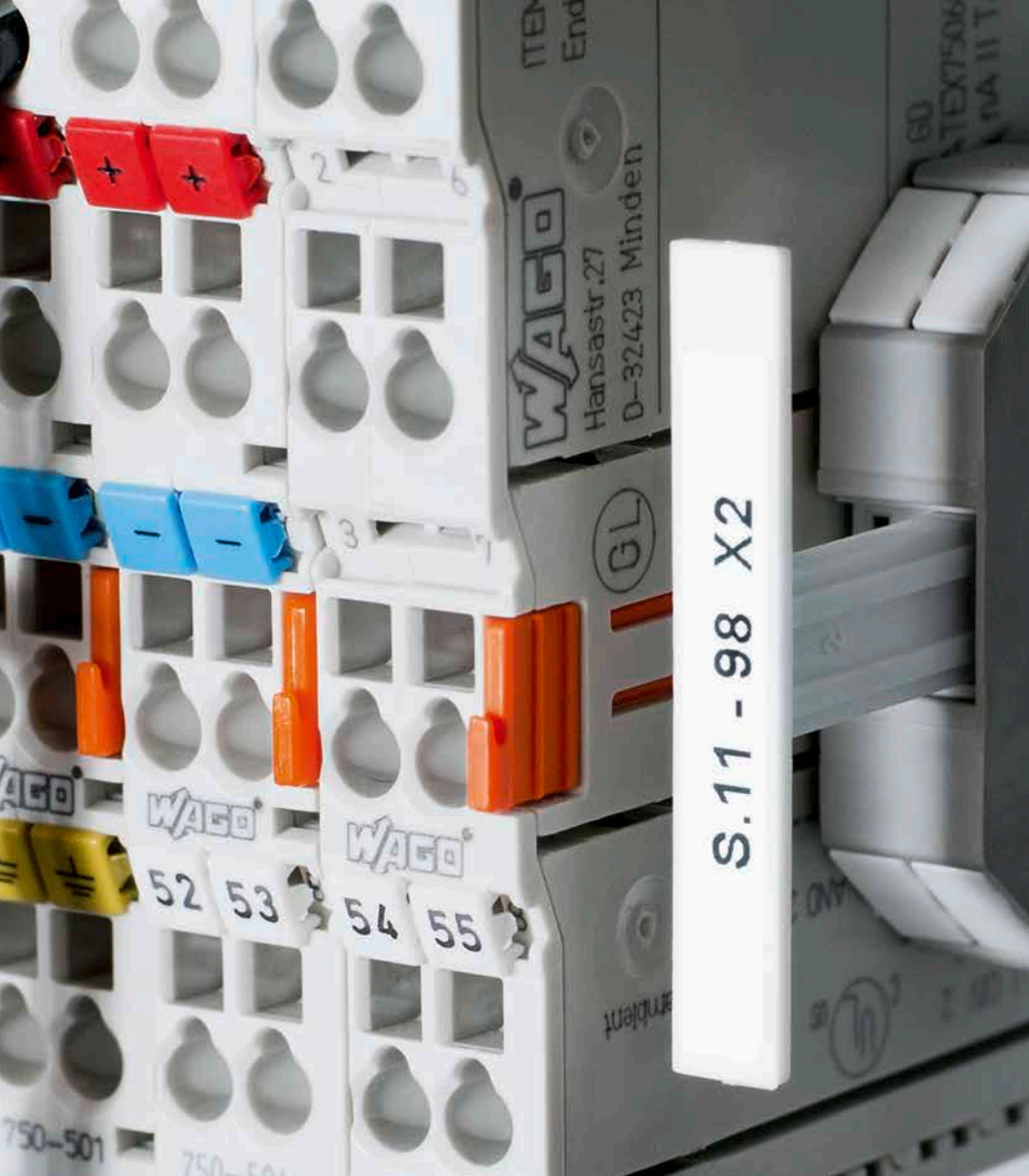


For *smart*PRINTER and TP 298+

Item No.	Size	Roll
210-808 (sample)	3 lines, 9.5 x 25 mm, white	1,500 pcs
249-119	Height-adjustable group marker carrier	

For TP 298+

210-708	5 lines, 9.5 x 25 mm, white	3,000 pcs
249-119	Height-adjustable group marker carrier	



WAGO

Hansastr.27
D-32423 Minden

GL

S.11 - 98 X2

WAGO

52 53

WAGO

54 55

750-501

750-501

ITEM
End

60
TEX7506
MA 11 T

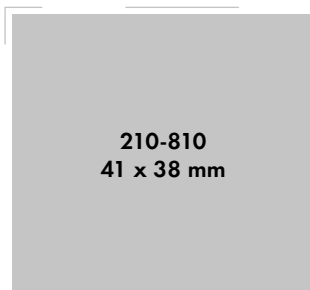
erhient

50

WAGO

LABELS

Self-Adhesive



For **smart**PRINTER and TP 298+

Item No.	Size	Roll/Color
210-810 (sample)	1 line, 5 x 35 mm	1,500 pcs/white
249-120	Height-adjustable group marker carrier	

For TP 298+

210-710	2 line, 5 x 35 mm	1,500 pcs/white
249-120	Height-adjustable group marker carrier	

WAGO Kontakttechnik GmbH & Co. KG
Hansastr. 27
32423 Minden



Product

Label 44 x 99, color silver

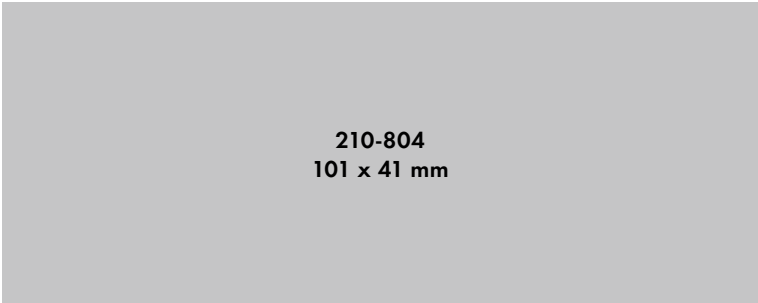
Date

February 2013

ID

210-804

TYPE PLATES



210-804
101 x 41 mm

For *smart*PRINTER and TP 298+

Item No.	Size
210-801	70 x 33 mm, white
210-802	70 x 33 mm, silver
210-803	99 x 44 mm, white
210-804 (sample)	99 x 44 mm, silver

For TP 298+

210-703	100 x 70 mm, white
210-704	100 x 70 mm, silver



Push-Button Accessories

210-851 Cover, transparent, 100 pcs

210-857 Cover, transparent, 100 pcs

210-859 Cover, transparent, 100 pcs

210-861 Cover, transparent, 100 pcs

210-863 Cover, transparent, 100 pcs

210-853 Push-button frame, black, 100 pcs

210-853 Push-button frame, black, 100 pcs

-

PUSH-BUTTON MARKERS

210-854
66 x 40 mm

For **smart**PRINTER and TP 298+

Item No. (Push-Button Marker)	Size	Roll	Color/Other
210-850 (for Eaton)	26.5 x 18.0 mm	1,000 pcs	Silver/Detachable adhesive
210-856 (for Siemens)	27.5 x 17.5 mm	1,000 pcs	Silver/Detachable adhesive
210-858 (for Siemens)	22.0 x 22.0 mm	1,000 pcs	Silver/Permanent adhesive
210-860 (for Siemens)	27.0 x 27.0 mm	1,000 pcs	Silver/Permanent adhesive
210-862 (for Siemens)	27.0 x 12.5 mm	1,000 pcs	Silver/Permanent adhesive
210-852	27.0 x 19.0 mm	350 pcs	Silver/Permanent adhesive
210-855	27.0 x 18.0 mm	350 pcs	Silver/Permanent adhesive
210-854 (sample)	28.0 x 28.0 mm	500 pcs	Silver/Permanent adhesive

ProServe®

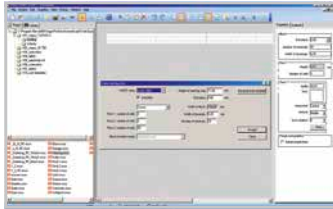
Designing · Ordering · Marking



ProServe® – Professional Services

ProServe® provides easy online configuration and marking of terminal block assemblies – it is compatible with all CAE systems and no software installation is required.

- WSCAD electronic GmbH
- RUPLAN
- see electrical CAADy
- ELCAD
- AutoCAD
- Engineering Base
- ePLAN
- E series
- Comos®
- promis engine siggraph.CAE
- ELEKTROCAD



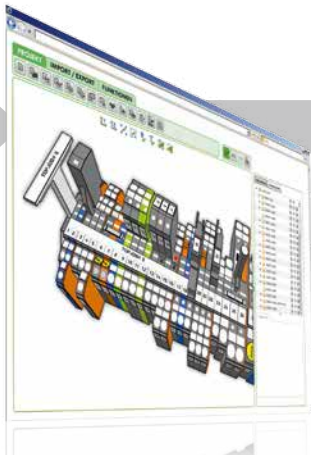
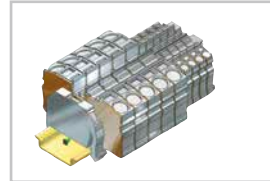
smartSCRIPT

Software simplifies marking, and conveniently controls printers.

Rail Assembly



2D/3D Data Export



smartDESIGNER

WAGO's online configurator for electrical interconnect and automation products. The all-in-one tool for ordering and printing.

THERMAL TRANSFER PRINTERS



TP 298+
258-298



smartPRINTER
258-5000

MOBILE PRINTER

Everything you need to know about printers, time-saving accessories and marking materials is available at:

www.wago.com/printer



DYMO 3M PL300
258-6000



Watch videos



<http://eshop.wago.com>

WAGO Kontakttechnik GmbH & Co. KG
Postfach 28 80 · D - 32385 Minden
Hansastraße 27 · D - 32423 Minden
Germany

Phone: +49 571 887-0
Fax: +49 571 887-169
Email: info@wago.com
Online: www.wago.com

**WE
INNOVATE!**



WAGO[®]