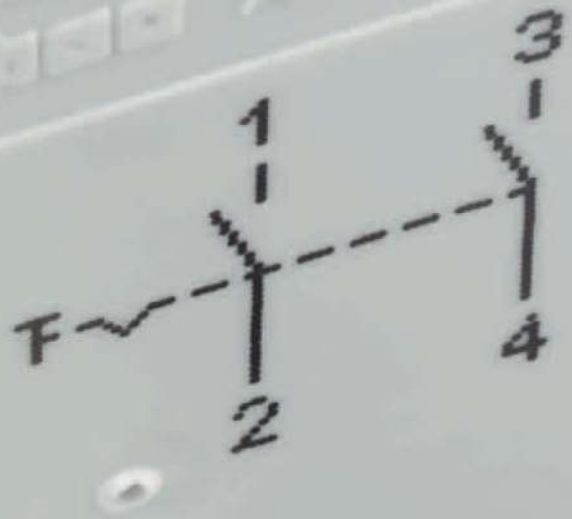




789



02  
V AC / 16A  
2774--01

# 8



## Switching Modules

Switching Modules in DIN-Rail Mount Enclosure, 789 Series

418 - 420

Pluggable Modules - Switches, 286 Series

421



## NAMUR Switching Amplifiers

Pluggable Modules - NAMUR Switching Amplifiers, 286 Series

422



## Rectifier Modules

Pluggable Modules - Bridge Rectifiers, 280, 286 Series

424 - 425



## Indicator Modules

DIN-Rail-Mounted Modules - LED Gate Module, 289 Serie

426

Pluggable Modules - LED Indicator, 286 Series

427



## Component Modules

DIN-Rail-Mounted Modules - Diode Gates, 289 Series

428 - 431

Pluggable Modules - Diode Gates, 286 Series

432

DIN-Rail-Mounted Modules - Resistors, 289 Series

433 - 434

DIN-Rail-Mounted Modules for Building Custom Circuits, 289 Series

435



## Potential Multiplication Modules

DIN-Rail Mount Potential Multiplication Modules, 288 Series

436 - 437



## Fault Indication Modules

Pluggable Modules - Fault Indication, 286 Series

438 - 439



## Modules with Additional Specialty Functions

Pluggable Modules - Current Flow Monitoring, 286 Series

440 - 441

Pluggable Modules - Fuses, 286 Series

442

Manual Control Modules in DIN-Rail Mount Enclosure, 789 Series

443

Pluggable Modules - SO Optocouplers, 286 Series

444

Pluggable Modules - SO Supply, 286 Series

445

Pluggable Modules - AND Gate, 286 Series

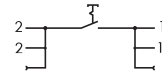
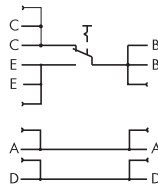
446

Pluggable Modules - Flip-Flop, 286 Series

447

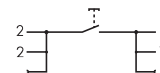
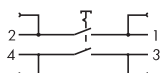
Switching module,  
changeover, 1-poleSwitching module,  
breaker, 1-pole

Similar to picture



Description	Item No.	Pack. Unit	Item No.	Pack. Unit
Switching module in DIN-rail mount enclosure, for DIN 35 rail	789-800	1	789-801	1
<b>Technical Data</b>				
	Accessories see page 115		Accessories see page 115	
<b>Contacts:</b>				
Contact material	Ag alloy		Ag alloy	
Operating voltage	250 VAC		250 VAC	
Max. switching power (resistive)	10 A		16 A	
Max. switching power (motor load)	4 A		4 A	
Peak inrush current	100 A, capacitive		100 A, capacitive	
Contact resistance	< 100 mΩ (12 V / 1A DC, new condition)		< 100 mΩ (12 V / 1A DC, new condition)	
Insulation resistance	> 100 MΩ (500 VDC, new condition)		> 100 MΩ (500 VDC, new condition)	
Contact gap	≥ 3 mm		≥ 3 mm	
Mechanical life	1 × 10 <sup>5</sup> switching operations		5 × 10 <sup>4</sup> switching operations	
Electrical life	1 × 10 <sup>4</sup> switching operations		1 × 10 <sup>4</sup> switching operations	
<b>General specifications:</b>				
Dielectric strength open contact	1.25 kV		1.25 kV	
Nominal voltage to EN 60664-1	250 V / 4 kV / 3		250 V / 4 kV / 3	
Ambient operating temperature at V <sub>N</sub>	-20 °C ... +55 °C		-20 °C ... +55 °C	
Storage temperature	-40 °C ... +80 °C		-40 °C ... +80 °C	
Dimensions (mm) W x H x L	17.5 x 55 x 90		17.5 x 55 x 90	
Wire connection	Height from upper-edge of DIN 35 rail CAGE CLAMP®		Height from upper-edge of DIN 35 rail CAGE CLAMP®	
Cross sections	0.08 mm <sup>2</sup> ... 2.5 mm <sup>2</sup> / AWG 28 ... 14		0.08 mm <sup>2</sup> ... 2.5 mm <sup>2</sup> / AWG 28 ... 14	
Strip lengths	5 ... 6 mm / 0.22 in		5 ... 6 mm / 0.22 in	
Standards/Specifications	EN 50178; EN 60664-1, EN 61058-1		EN 50178; EN 60664-1, EN 61058-1	

	Switching module, breaker, 2-pole	Switching module, switch, 1-pole
--	--------------------------------------	-------------------------------------



Description	Item No.	Pack. Unit	Item No.	Pack. Unit
Switching module in DIN-rail mount enclosure, for DIN 35 rail	789-802	1	789-803	1

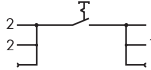
**Technical Data**

Accessories see page 115

Accessories see page 115

Contacts:		
Contact material	Ag alloy	Ag alloy
Operating voltage	250 VAC	250 VAC
Max. switching power (resistive)	16 A	16 A
Max. switching power (motor load)	4 A	4 A
Peak inrush current	100 A, capacitive	100 A, capacitive
Contact resistance	< 100 mΩ (12 V / 1A DC, new condition)	< 100 mΩ (12 V / 1A DC, new condition)
Insulation resistance	> 100 MΩ (500 VDC, new condition)	> 100 MΩ (500 VDC, new condition)
Contact gap	≥ 3 mm	≥ 3 mm
Mechanical life	5 x 10 <sup>4</sup> switching operations	5 x 10 <sup>4</sup> switching operations
Electrical life	1 x 10 <sup>4</sup> switching operations	1 x 10 <sup>4</sup> switching operations
<b>General specifications:</b>		
Dielectric strength open contact	1.25 kV	1.25 kV
Nominal voltage to EN 60664-1	250 V / 4 kV / 3	250 V / 4 kV / 3
Ambient operating temperature at V <sub>N</sub>	-20 °C ... +55 °C	-20 °C ... +55 °C
Storage temperature	-40 °C ... +80 °C	-40 °C ... +80 °C
Dimensions (mm) W x H x L	17.5 x 55 x 90	17.5 x 55 x 90
Wire connection	Height from upper-edge of DIN 35 rail CAGE CLAMP®	Height from upper-edge of DIN 35 rail CAGE CLAMP®
Cross sections	0.08 mm <sup>2</sup> ... 2.5 mm <sup>2</sup> / AWG 28 ... 14	0.08 mm <sup>2</sup> ... 2.5 mm <sup>2</sup> / AWG 28 ... 14
Strip lengths	5 ... 6 mm / 0.22 in	5 ... 6 mm / 0.22 in
Standards/Specifications	EN 50178; EN 60664-1, EN 61058-1	EN 50178; EN 60664-1, EN 61058-1

Switching module,  
push-button switch, 1-pole



Description	Item No.	Pack. Unit
Switching module in DIN-rail mount enclosure, for DIN 35 rail	789-804	1
<b>Technical Data</b>		
Accessories see page 115		
<b>Contacts:</b>		
Contact material	Ag alloy	
Operating voltage	250 VAC	
Max. switching power (resistive)	16 A	
Max. switching power (motor load)	4 A	
Peak inrush current	100 A, capacitive	
Contact resistance	< 100 mΩ (12 V / 1A DC, new condition)	
Insulation resistance	> 20 MΩ	
Contact gap	≥ 3 mm	
Mechanical life	5 × 10 <sup>4</sup> switching operations	
Electrical life	1 × 10 <sup>4</sup> switching operations	
<b>General specifications:</b>		
Dielectric strength open contact	1.25 kV	
Nominal voltage to EN 60664-1	250 V / 4 kV / 3	
Ambient operating temperature at V <sub>N</sub>	-20 °C ... +55 °C	
Storage temperature	-40 °C ... +80 °C	
Dimensions (mm) W x H x L	17.5 x 55 x 90	
Wire connection	Height from upper-edge of DIN 35 rail CAGE CLAMP®	
Cross sections	0.08 mm <sup>2</sup> ... 2.5 mm <sup>2</sup> / AWG 28 ... 14	
Strip lengths	5 ... 6 mm / 0.22 in	
Standards/Specifications	EN 50178; EN 60664-1, EN 61058-1	