

PCB Terminal Strips

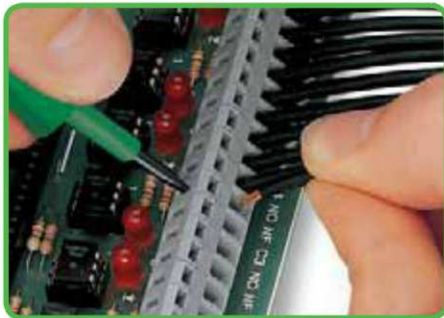
Description and Handling

Series 236, 736, 737, 738, 742 and 745

Series 236



Conductor termination using a screwdriver 3.5 mm / 0.137 in: Wire entry and operation of the clamp are parallel to each other.



Conductor termination using a screwdriver 3.5 mm / 0.137 in: Wire entry and operation of the clamp is done at a right angle to each other.



Colored mixed terminal strips, with custom direct printing.

Series 736, 737 and 738



Mix of double deck and triple deck terminal strips.



Space-saving triple deck terminal strip.



Wiring of 4-conductor sensors.

Series 745

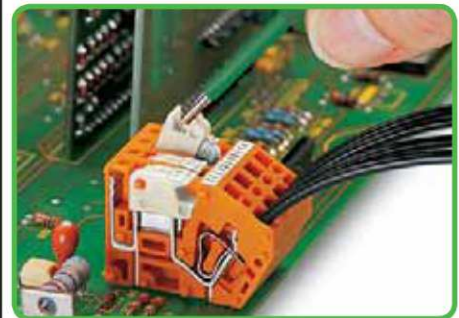


Conductor termination using a screwdriver 5.5 mm / 0.21 in.



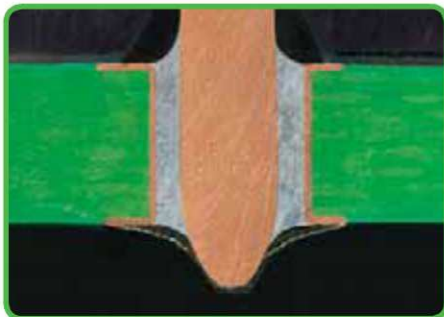
For terminal strips in other colors, please contact factory.

Series 742



Opening of disconnect.

Reflow soldering



In the manufacture of electronic products, **Surface Mount Technology** has led to a rapid rise in productivity.

The integration of classic electromechanical components such as connectors or PCB terminal blocks into the reflow soldering process offers even more potential for economy.

By using high temperature-resistant plastic and an optimized pin design, the **WAGO Through Hole Reflow** PCB terminal blocks meet the requirement for SMT process capability while maintaining the necessary stability.

PressIn technique



Special features of WAGO PressIn technique:

- Press-in pin with special elastic contact zone according to the needle eye principle
- Suitable for all printed circuit boards with the correct tin plating for press-in connectors
- Mechanically stable pin dimensions
 - 0.6 mm/0.02 in x 0.6 mm/0.02 in or
 - 0.8 mm/0.03 in x 0.8 mm/0.03 in
- Metal-plated hole with optimum diameter - 1.0 or 1.45^{+0.09}/_{-0.06} mm

- Press-in pin for PCB thickness from 1.4 mm/0.05 in to 3 mm/0.1 in (similar to DIN EN 60352-5 EE 1.45 standard)
- Press-in length of approx. 3.2 mm/0.12 in - no unnecessary projection on underside of PCB
- Low press-in force required - advantage for both PCB and components
- High retention force within the PCB - double the values required by DIN EN 60352-5
- Robust bonded connection
- Excellent elastic spring behavior
- No deformation of the metal-plated end hole
- Length of the contact area ≥ 1.3 mm/0.05 in
- No deformation of multilayer PCBs
- Minimal tin removal in the contact hole - advantage for PCB and the contact points
- Application-specific press-in tool - please contact factory

Modular Terminal Blocks and Terminal Strips 2.5 mm²/AWG 12 **CAGE CLAMP®** Pin Spacings 5/5.08 mm/0.2 in, 7.5/7.62 mm/0.3 in and 10/10.16 mm/0.4 in Series 236

Pin spacing 5/5.08 mm / 0.2 in 0.08 – 2.5 mm ² AWG 28 – 12* 250 V/4 kV/3, 16 A 300 V, 15 A 500 V/4 kV/2, 16 A 300 V, 15 A 5 – 6 mm / 0.22 in ① Approvals	Pin spacing 7.5/7.62 mm / 0.3 in 0.08 – 2.5 mm ² AWG 28 – 12* 400 V/6 kV/3, 16 A 300 V, 15 A 800 V/6 kV/2, 16 A 300 V, 15 A 5 – 6 mm / 0.22 in ① Approvals	Pin spacing 10/10.16 mm / 0.4 in 0.08 – 2.5 mm ² AWG 28 – 12* 500 V/6 kV/3, 16 A 300 V, 15 A 1000 V/6 kV/2, 16 A 300 V, 15 A 5 – 6 mm / 0.22 in ① Approvals
--	--	---

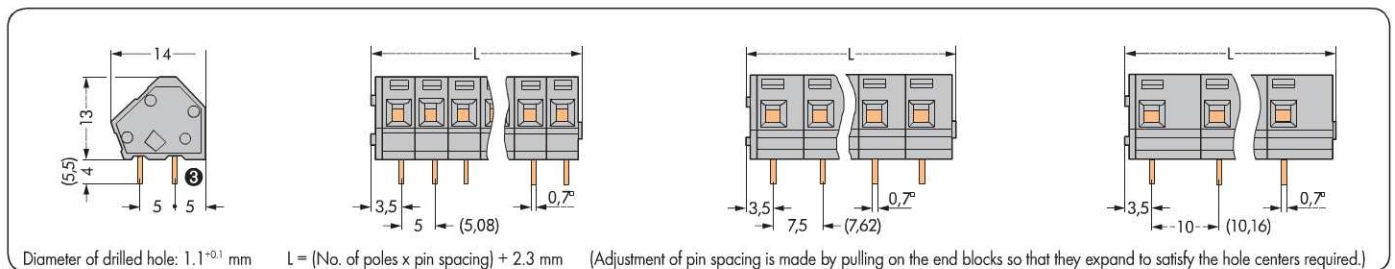


Color	Item No.	Item No.	Color	Item No.	Item No.	Color	Item No.	Item No.
Modular terminal block,			Modular terminal block,			Modular terminal block,		
1 solder pin/pole, rear ③	2 solder pins/pole		1 solder pin/pole, rear ③	2 solder pins/pole		1 solder pin/pole, rear ③	2 solder pins/pole	
gray	236-101	236-401	gray	236-201	236-501	gray	236-301	236-601
dark gray	236-712	236-742	dark gray	236-722	236-752	dark gray	236-732	236-762
light gray	236-713	236-743	light gray	236-723	236-753	light gray	236-733	236-763
blue	236-714	236-744	blue	236-724	236-754	blue	236-734	236-764
green	236-715	236-745	green	236-725	236-755	green	236-735	236-765
orange	236-716	236-746	orange	236-726	236-756	orange	236-736	236-766
light green	236-717	236-747	light green	236-727	236-757	light green	236-737	236-767
black	236-854	236-851	black	236-855	236-852	black	236-856	236-853
Pieces per packing unit 600 (6 x 100)			Pieces per packing unit 400 (4 x 100)			Pieces per packing unit 300 (3 x 100)		
Terminal strip, gray, standard lengths,			Terminal strip, gray, standard lengths,			Terminal strip, gray, standard lengths,		
1 solder pin/pole, rear ③	2 solder pins/pole		1 solder pin/pole, rear ③	2 solder pins/pole		1 solder pin/pole, rear ③	2 solder pins/pole	
2	236-102	236-402	2	236-202	236-502	2	236-302	236-602
3	236-103	236-403	3	236-203	236-503	3	236-303	236-603
:	:	:	4	236-204	236-504	4	236-304	236-604
8	236-108	236-408	6	236-206	236-506	6	236-306	236-606
12	236-112	236-412	8	236-208	236-508	8	236-308	236-608
16	236-116	236-416	12	236-212	236-512	12	236-312	236-612
24	236-124	236-424	16	236-216	236-516	16	236-316	236-616
36	236-136	236-436	24	236-224	236-524	24	236-324	236-624
48	236-148	236-448						

Accessories, Series 236 (Marker strips, see Section 6)

Operating tool ④, plastic 236-332 1 metal 236-335 1	End plates, snap-on type, 1 mm/0.039 in thick gray 236-100 100 dark gray 236-200 100 light gray 236-300 100 blue 236-400 100 green 236-500 100 orange 236-600 100 light green 236-700 100 black 236-850 100	Additional item numbers for colored terminal strips: black ... / ... -004 blue ... / ... -006 dark gray ... / ... -008 light gray ... / ... -009 orange ... / ... -012 light green ... / ... -017 green ... / ... -023
Terminal blocks for Ex e II applications, see Full Line Catalog, Volume 2.		② Terminal blocks with blue insulation are suitable for Ex i applications (only for pin spacing 7.5/7.62 mm/0.3 in and 10/10.16 mm/0.4 in)

Dimensions (in mm)



Double Deck and Triple Deck PCB Terminal Strips 2.5 mm²/AWG 12 Pin Spacings 5 mm/0.197 and 5.08 mm/0.2 in Series 736 and 737

<p>Pin spacing 5 mm / 0.197 in Pin spacing 5.08 mm / 0.2 in 0.08 – 2.5 mm² AWG 28 – 12* 250 V/4 kV/3 Ⓢ, 12 A 300 V, 10 A 500 V/4 kV/2 Ⓢ, 12 A 300/600 V, 10 A</p> <p>5 – 6 mm / 0.22 in</p> <p>Ⓢ Approvals</p>	<p>Pin spacing 5 mm / 0.197 in Pin spacing 5.08 mm / 0.2 in 0.08 – 2.5 mm² AWG 28 – 12* 250 V/4 kV/3 Ⓢ, 12 A 300 V, 10 A 500 V/4 kV/2 Ⓢ, 12 A 300/600 V, 10 A</p> <p>5 – 6 mm / 0.22 in</p> <p>Ⓢ Approvals</p>	<p>Pin spacing 5 mm / 0.197 in Pin spacing 5.08 mm / 0.2 in 0.08 – 2.5 mm² AWG 28 – 12* 250 V/4 kV/3 Ⓢ, 12 A 300 V, 10 A 500 V/4 kV/2 Ⓢ, 12 A 300/600 V, 10 A</p> <p>5 – 6 mm / 0.22 in</p> <p>Ⓢ Approvals</p>
---	---	---

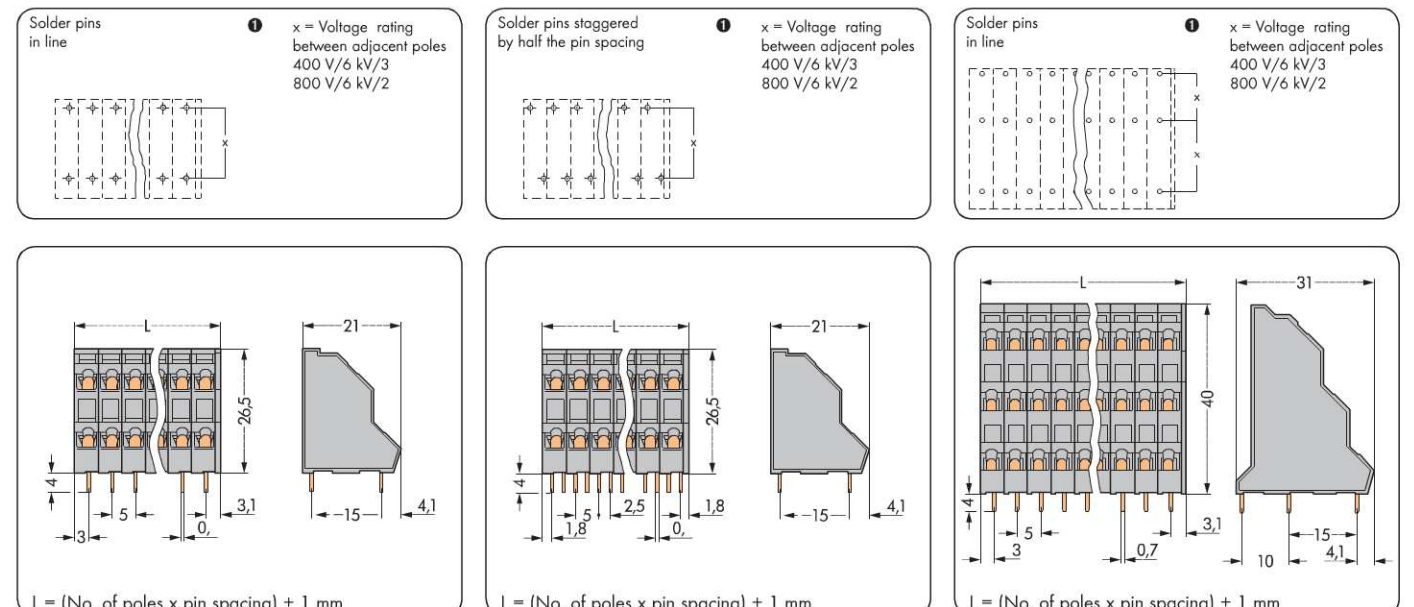


No. of poles	Item No.	Item No.	No. of poles	Item No.	Item No.	No. of poles	Item No.	Item No.
Double deck terminal strip, 2 solder pins in line			Double deck terminal strip, 2 solder pins staggered by half the pin spacing			Triple deck terminal strip, 3 solder pins in line		
Pin spacing	5 mm/0.197 in	5.08 mm/0.2 in	Pin spacing	5 mm/0.197 in	5.08 mm/0.2 in	Pin spacing	5 mm/0.197 in	5.08 mm/0.2 in
		orange		gray	orange		gray	orange
2 x 2	736-102	736-302	2 x 2	736-202	736-402	2 x 3	737-102	737-302
3 x 2	736-103	736-303	3 x 2	736-203	736-403	3 x 3	737-103	737-303
4 x 2	736-104	736-304	4 x 2	736-204	736-404	4 x 3	737-104	737-304
6 x 2	736-106	736-306	6 x 2	736-206	736-406	6 x 3	737-106	737-306
8 x 2	736-108	736-308	8 x 2	736-208	736-408	8 x 3	737-108	737-308
12 x 2	736-112	736-312	12 x 2	736-212	736-412	12 x 3	737-112	737-312
16 x 2	736-116	736-316	16 x 2	736-216	736-416	16 x 3	737-116	737-316
24 x 2	736-124	736-324	24 x 2	736-224	736-424	24 x 3	737-124	737-324
For other lengths, please contact factory			For other lengths, please contact factory			For other lengths, please contact factory		

Accessories, Series 736 and 737

<p>Marker cards, 80 self-adhesive strips per card</p> <p>Marking</p> <table border="1"> <thead> <tr> <th></th> <th>Pin spacing 5 mm/0.197 in</th> <th>Pin spacing 5.08 mm/0.2 in</th> </tr> </thead> <tbody> <tr> <td>1 - 16 (160x)</td> <td>210-332/0500-0202</td> <td>210-332/0508-0202</td> </tr> <tr> <td>17 - 32 (160x)</td> <td>210-332/0500-0204</td> <td>210-332/0508-0204</td> </tr> <tr> <td>33 - 48 (160x)</td> <td>210-332/0500-0206</td> <td>210-332/0508-0206</td> </tr> <tr> <td>1 - 32 (80x)</td> <td>210-332/0500-0205</td> <td>210-332/0508-0205</td> </tr> </tbody> </table> <p>Direct printing on request</p>		Pin spacing 5 mm/0.197 in	Pin spacing 5.08 mm/0.2 in	1 - 16 (160x)	210-332/0500-0202	210-332/0508-0202	17 - 32 (160x)	210-332/0500-0204	210-332/0508-0204	33 - 48 (160x)	210-332/0500-0206	210-332/0508-0206	1 - 32 (80x)	210-332/0500-0205	210-332/0508-0205	<p>Operating tool, for a professional wiring of terminal strips</p> <p>partially insulated 233-335 of insulating material 233-332</p> <p>Operating tool, with partially insulated shaft (2.5 x 0.4) mm/(0.098 x 0.016) in 210-719</p>
	Pin spacing 5 mm/0.197 in	Pin spacing 5.08 mm/0.2 in														
1 - 16 (160x)	210-332/0500-0202	210-332/0508-0202														
17 - 32 (160x)	210-332/0500-0204	210-332/0508-0204														
33 - 48 (160x)	210-332/0500-0206	210-332/0508-0206														
1 - 32 (80x)	210-332/0500-0205	210-332/0508-0205														

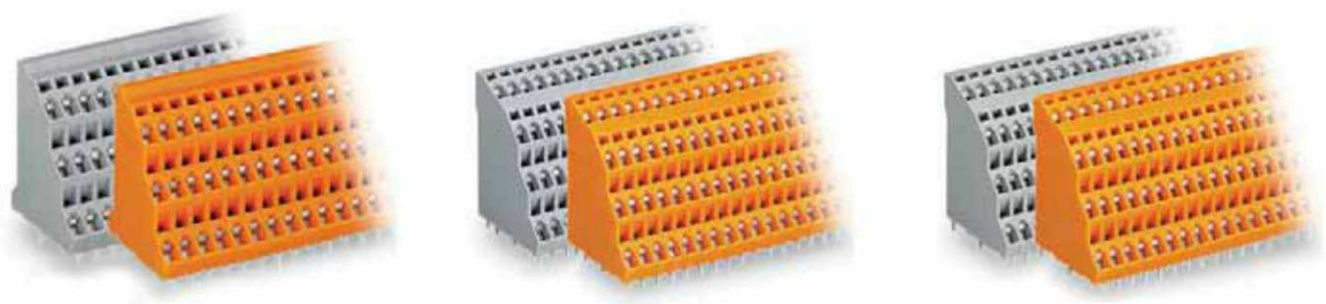
Dimensions (in mm) Diameter of drilled hole: 1.3^{+0.1} mm



Ⓢ Approvals are available online at: www.wago.com. *AWG 12: THHN, THWN
For technical explanations and abbreviations, see technical section.

Triple Deck and Quadruple Deck PCB Terminal Strips 2.5 mm²/AWG 12, Pin Spacings 5 mm/0.197 in and 5.08 mm/0.2 in, Series 737 and 738

<p>Pin spacing 5 mm / 0.197 in Pin spacing 5.08 mm / 0.2 in 0.08 – 2.5 mm² AWG 28 – 12* 250 V/4 kV/3 ①, 12 A 300 V, 10 A 500 V/4 kV/2 ①, 12 A 300/600 V, 10 A</p> <p>② Approvals</p>	<p>Pin spacing 5 mm / 0.197 in Pin spacing 5.08 mm / 0.2 in 0.08 – 2.5 mm² AWG 28 – 12* 250 V/4 kV/3 ①, 10 A 300 V, 10 A 500 V/4 kV/2 ①, 10 A 300 V, 10 A</p> <p>② Approvals</p>	<p>Pin spacing 5 mm / 0.197 in Pin spacing 5.08 mm / 0.2 in 0.08 – 2.5 mm² AWG 28 – 12* 250 V/4 kV/3 ①, 10 A 300 V, 10 A 500 V/4 kV/2 ①, 10 A 300 V, 10 A</p> <p>② Approvals</p>
---	---	---

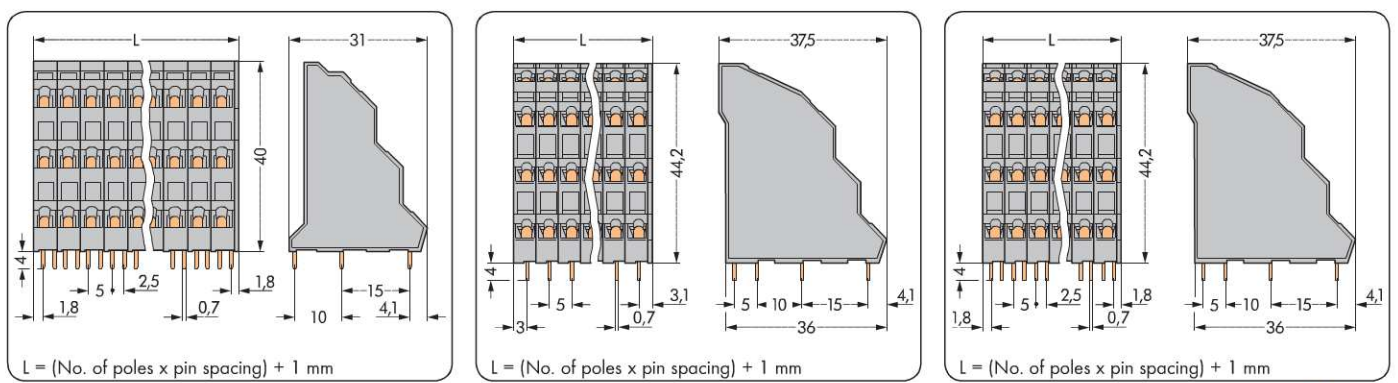
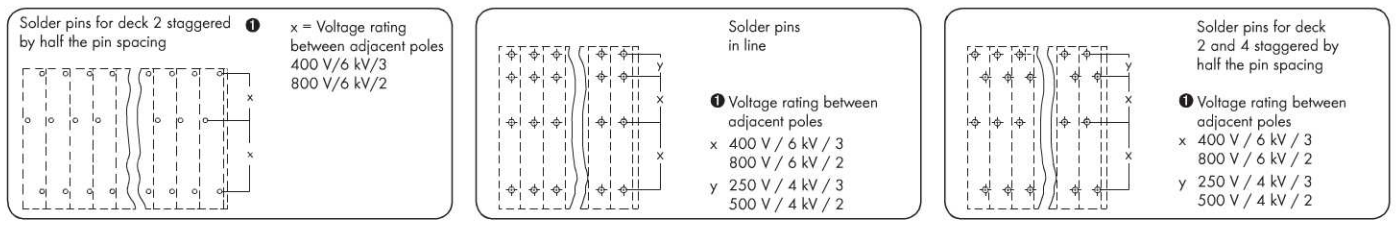


No. of poles	Item No.	Item No.	No. of poles	Item No.	Item No.	No. of poles	Item No.	Item No.
Triple deck terminal strip, solder pins for deck 2 staggered by half the pin spacing			Quadruple deck terminal strip, 4 solder pins in line			Quadruple deck terminal strip, solder pins for deck 2 and 4 staggered by half the pin spacing		
Pin spacing	5 mm/0.197 in	5.08 mm/0.2 in	Pin spacing	5 mm/0.197 in	5.08 mm/0.2 in	Pin spacing	5 mm/0.197 in	5.08 mm/0.2 in
	gray	orange		gray	orange		gray	orange
2 x 3	737-202	737-402	2 x 4	738-102	738-302	2 x 4	738-202	738-402
3 x 3	737-203	737-403	3 x 4	738-103	738-303	3 x 4	738-203	738-403
4 x 3	737-204	737-404	4 x 4	738-104	738-304	4 x 4	738-204	738-404
6 x 3	737-206	737-406	6 x 4	738-106	738-306	6 x 4	738-206	738-406
8 x 3	737-208	737-408	8 x 4	738-108	738-308	8 x 4	738-208	738-408
12 x 3	737-212	737-412	12 x 4	738-112	738-312	12 x 4	738-212	738-412
16 x 3	737-216	737-416	16 x 4	738-116	738-316	16 x 4	738-216	738-416
24 x 3	737-224	737-424	24 x 4	738-124	738-324	24 x 4	738-224	738-424
For other lengths, please contact factory			For other, smaller lengths, please contact factory			For other, smaller lengths, please contact factory		

Accessories, Series 737 and 738

<p>Marker cards, 80 self-adhesive strips per card</p> <table border="1"> <thead> <tr> <th>Marking</th> <th>Pin spacing 5 mm/0.197 in</th> <th>Pin spacing 5.08 mm/0.2 in</th> </tr> </thead> <tbody> <tr> <td>1 – 16 (160x)</td> <td>210-332/0500-0202</td> <td>210-332/0508-0202</td> </tr> <tr> <td>17 – 32 (160x)</td> <td>210-332/0500-0204</td> <td>210-332/0508-0204</td> </tr> <tr> <td>33 – 48 (160x)</td> <td>210-332/0500-0206</td> <td>210-332/0508-0206</td> </tr> <tr> <td>1 – 32 (80x)</td> <td>210-332/0500-0205</td> <td>210-332/0508-0205</td> </tr> </tbody> </table> <p>Direct printing on request</p>	Marking	Pin spacing 5 mm/0.197 in	Pin spacing 5.08 mm/0.2 in	1 – 16 (160x)	210-332/0500-0202	210-332/0508-0202	17 – 32 (160x)	210-332/0500-0204	210-332/0508-0204	33 – 48 (160x)	210-332/0500-0206	210-332/0508-0206	1 – 32 (80x)	210-332/0500-0205	210-332/0508-0205	<p>Operating tool, for a professional wiring of terminal strips</p> <p>partially insulated of insulating material</p> <p>233-335 233-332</p> <p>Operating tool, with partially insulated shaft (2.5 x 0.4) mm / (0.098 x 0.016) in</p> <p>210-719</p>
Marking	Pin spacing 5 mm/0.197 in	Pin spacing 5.08 mm/0.2 in														
1 – 16 (160x)	210-332/0500-0202	210-332/0508-0202														
17 – 32 (160x)	210-332/0500-0204	210-332/0508-0204														
33 – 48 (160x)	210-332/0500-0206	210-332/0508-0206														
1 – 32 (80x)	210-332/0500-0205	210-332/0508-0205														

Dimensions (in mm) Diameter of drilled hole: 1.3^{+0.1} mm



Please find the entire product range in our Full Line Catalog, Volume 2. More information at www.wago.com.

