

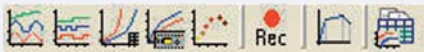
# ProfiSignalGo – Data acquisition and

## Monitoring and analysis

ProfiSignal Go enables measurement data to be saved, displayed as trends, analyzed and exported in ASCII and CSV formats. Just a few simple steps are required to go from measurement channels to trend output.

Online and offline measurement data can be continuously evaluated in trends. Go offers the following diagrams:

- y(t) diagram
- y(x) diagram
- Characteristic curve
- Oscilloscope
- Digital logical analysis



The diagrams can be run simultaneously. There are no restrictions on either the volume of measurement data or the number of channels.

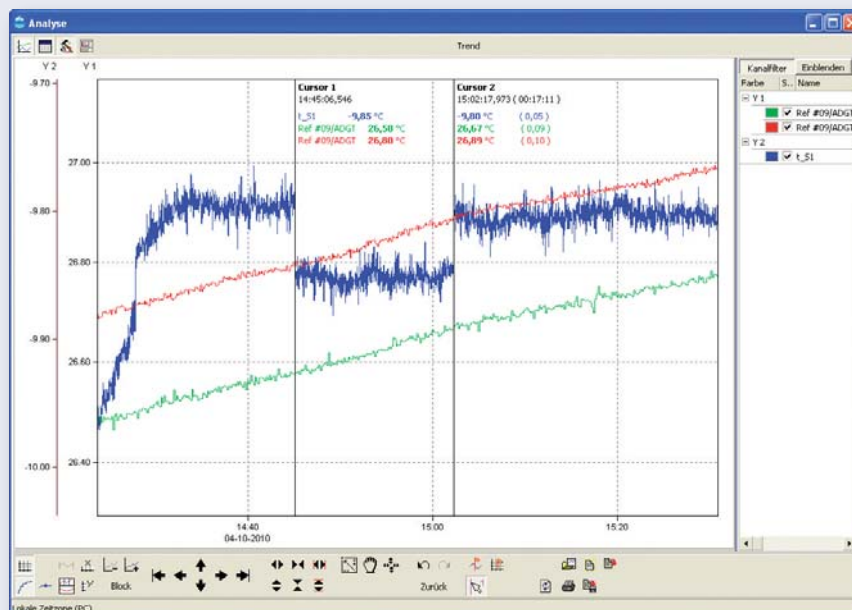
## Limitless trend options

The DataService enables uninterrupted portrayal of online and offline measurement data. Users can zoom in on archived data during a measurement run. This function is unique and especially valued by users.

ProfiSignal Go is also capable of processing large data volumes. The Go recording algorithm ensures readability of all information at the highest zoom settings. Peaks remain visible even for extremely long time ranges. This function facilitates the searching of maximum/minimum values.

## Efficient recording of measurement data

ProfiSignal Go includes the complete DataService software. This software enables convenient data storage and archiving functions. Measurement data can be stored to files or to databases.



ProfiSignal Go trend

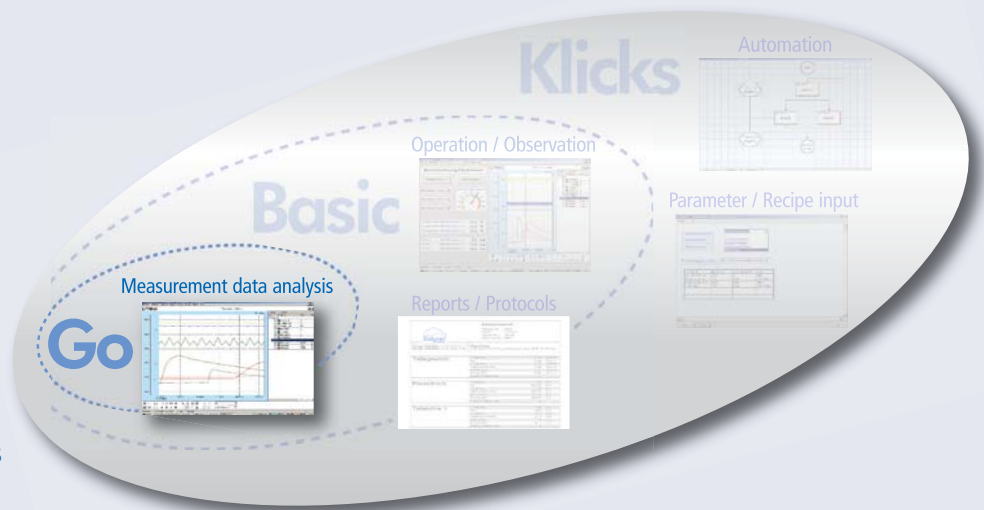
# analysis

## Product features

- Monitoring and analysis of any type of measurement data
- Recording tests to separate files
- Permanent storage to databases
- Portrayal in trends
- Uninterrupted switching to offline mode
- ASCII export as CSV files
- Print out or EMF export
- Offline calculation functions
- Statistical evaluation
- Analysis with cursor functions to  $\mu\text{sec}$
- Recording of diagram configurations
- Evaluation of digital signalling processes
- Alarm functions for digital events
- Email or fax notification of alarms

## Various Applications from ProfiSignal Go

- Mobile and fixed data acquisition
- Laboratory data acquisition
- Measuring at installation
- Measuring service data
- Process data acquisition and analysis
- Fault diagnostics and recorder functions
- Experiments and testing



## A range of interfaces

ProfiSignal Go is for use with Delphin's Message and Expert series. ProfiSignal Go is also equipped with an OPC Server and Client, a Modbus TCP interface and a programming interface. Drivers are also available for all the standard data acquisition systems, e.g. VXI, HBM, NI, PSI and the ADAM modules. The modular design enables inexpensive programming interfaces.

## Alarm table – monitoring and alerting

In conjunction with the DataService, ProfiSignal Go provides a diverse range of alarm and monitoring functions. In the event of alarms, digital outputs can be switched and users notified via email. An alarm table provides an overview of current and archived alarm events.