

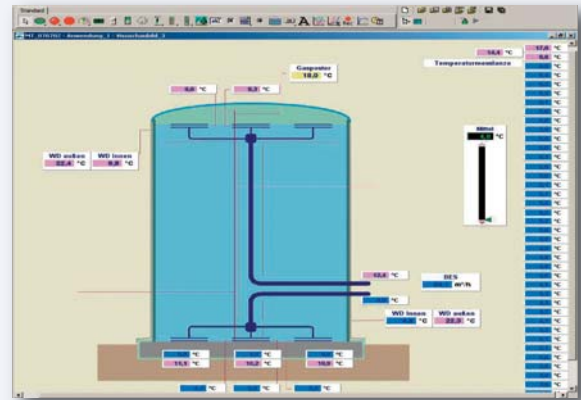
ProfiSignal Basic – Operation and observation

Customized applications

ProfiSignal Basic is a complete software package to meet user requirements in the fields of measurement data acquisition, operation and monitoring. Basic provides ready to use modules for:

- Acquiring measurement data
- Monitoring processes
- Operating and observing test stands
- Generating reports
- Basic automation

ProfiSignal Basic is designed to be fully configurable and compatible for continuous processes (e.g. operational data acquisition) as well as batch processes (e.g. data from experiments and trials). Basic includes basic automation functions for measurement procedures. Basic includes every function from ProfiSignal Go.



ProfiSignal Basic visualization

Operation and monitoring

A large range of operation and observation objects enable the simple generation of process visualization diagrams. These are available with analysis functions. Operating and monitoring functions can be organized into viewing images. Even inexperienced users are able to quickly generate their own applications. These are generated in development mode and can then be switched for operation to runtime mode.

Development environment



Runtime mode

Continuous evaluation

The integrated DataService, especially suitable for large amounts of data, enables historical data to be immediately displayed on the screen at high-level resolution. Evaluation can take place from the company network or from anywhere in the world. Measurement data can be stored over extremely long periods of time. For vibration analysis or for the evaluation of transient events, data can easily be acquired and stored at kHz-sampling-levels. Recorders allow data acquired for specific tasks to be stored in separate files on the PC.



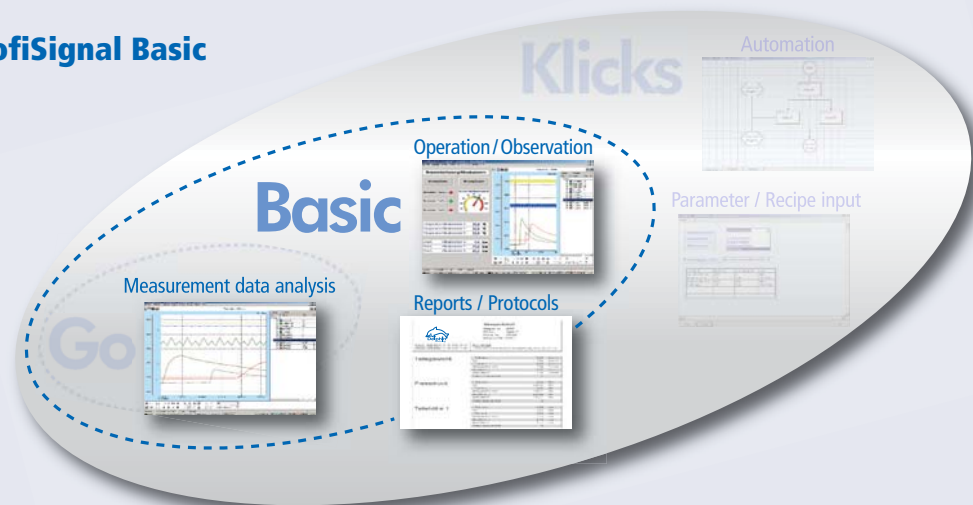
Applications are generated with ProfiSignal in the development mode and switched to runtime mode for operation.

Product features

- Runs multiple applications simultaneously
- Diverse operating and observation functions
- Monitoring and analysis of any measurement data
- Recording data from experiments to separate files
- Permanent data storage to databases
- Portrayal of online and offline data in trends
- Basic functions for automation
- Formula editor
- ASCII data export in CSV files
- Custom-made reports
- Offline calculation functions
- Statistical evaluation
- Analysis with cursor functions to μsec resolution
- Recording of diagram configurations
- Evaluation of digital signalling processes
- Alarm functions for digital events
- Email or fax notification in alarm event

Various Applications from ProfiSignal Basic

- Mobile and fixed data acquisition
- Laboratory data acquisition
- Test stand measurement technology
- Clean room monitoring
- Visualization of operational data
- Process data acquisition and analysis
- Experiments and tests
- Machine visualization



Measurement data analysis

A range of diagrams are available for measurement data analysis. $Y(t)$ diagrams enable high resolution portrayal of continuous processes over long time periods. This is particularly beneficial for quality assurance and fault diagnostic systems. Both slow and fast signals can be combined in one graph. A formula manager enables online and offline computations of measurement data as well as the recording and portrayal of computed results. Complex efficiency computations as well as basic temperature averages are simple to perform.

Reports and protocols

As well as measurement data and computed data, a report may also contain objects such as $y(t)$ diagram (trends), $y(x)$ diagram (characteristic curves), tables, illustrations, input data and text. Reports can be generated and archived automatically according to time or events. This is an ideal tool for quality assurance, quality certification and accounting purposes.