



LED Connection Technology For LED Modules and Lighting



WAGO LIGHTING TECHNOLOGY

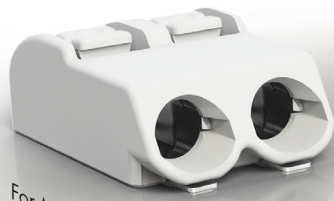
Highlights in Connection Technology

Today, modern lighting technology bridges the gap between well-being, economical operation and aesthetics. This has made advanced connection technologies a critical part of every lighting system. Ingeniously designed, WAGO connectors guarantee fast and reliable electrical terminations, as well as trouble-free operation over the entire lifetime of the lights.

The demands placed on connection technology are high, especially for LED applications. LED lighting opens up new possibilities that must be factored into the design and engineering of connectors. Adding to this complexity, connections must be convenient and user-friendly.

Connect with WAGO:

- Innovative concepts and solutions for the lighting industry
- Easy-to-use design saves installation time
- Proven spring pressure termination technology provides maintenance-free connections
- Worldwide product availability
- Worldwide commercial and technical support
- Certified processes and products that set high quality standards



For Manual and
Automated Wiring Systems
2060



For Direct Power
System Feed-In
2061



2059 For the
Smallest Sizes

SMD PCB TERMINAL BLOCKS

For LED Modules and Drivers

2059 Series – For the Smallest Sizes

- Conductor sizes: 26–20 AWG (0.14–0.5 mm²), solid*
- Low profile of just 2.7 mm minimizes shadowing
- Push-in termination of solid conductors
- Easy conductor removal via operating tool
- Assemble terminal strips without losing any poles

2060 Series – For Manual and Automated Wiring Systems

- Conductor sizes: 24–18 AWG (0.2–0.75 mm²)
- Low profile of just 4.5 mm minimizes shadowing
- Push-in termination of solid conductors
- Push-buttons simplify insertion/removal of all conductor types
- Board-to-board link simplifies in-line assembly of LED modules
- Assemble terminal strips without losing any poles

2061 Series – For Direct Power System Feed-In

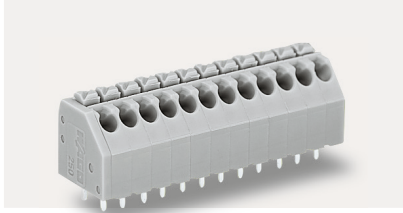
- Conductor sizes: 20–16 AWG (0.5–1.5 mm²)
- Push-in termination of solid conductors
- Push-buttons simplify insertion/removal of all conductor types
- Ideal for automated wiring systems
- Assemble terminal strips without losing any poles

www.wago.com/SMD

*0.5 mm² (20 AWG) "sol.": Please observe the usage and installation notes found in the data sheet.

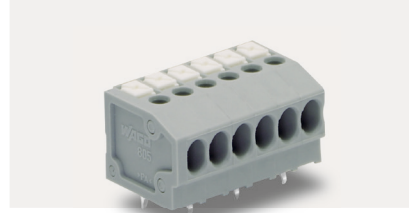
PCB TERMINAL BLOCKS

For Drivers



250 Series – For Streamlined Connection and Disconnection of All Conductor Types

- Conductor sizes: 24–16 AWG (0.2–1.5 mm²)
- Save time via push-in termination of solid conductors, also suited for automated wiring
- 45° conductor entry angle provides easy, space-saving wiring
- Push-buttons simplify manual insertion/removal of all conductor types



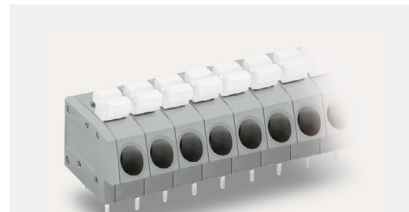
805 Series – For Every Purpose

- Conductor sizes: 24–16 AWG (0.2–1.5 mm²)
- Flush-mount push-buttons that close with minimal force for extremely convenient termination/removal of fine-stranded conductors
- Push-in termination of solid conductors, also suited for automated wiring



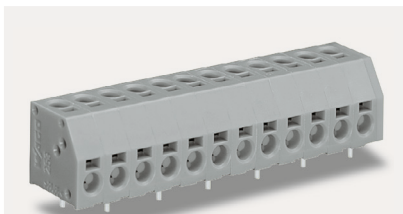
744 Series – Streamlined for Automated Wiring

- Conductor sizes: 20–16 AWG (0.5–1.5 mm²)
- Push-in termination, also suited for automated wiring
- Just 6.4 mm tall



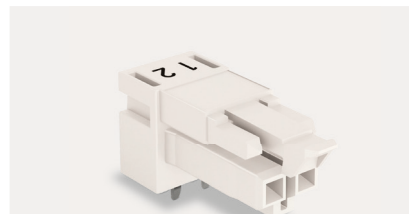
804 Series – For Large Conductors

- Conductor sizes: 20–12 AWG (0.25–2.5 mm²)
- Internal potential commoning (optional)
- Push-in termination of solid conductors



253 Series – For Wiring from Different Directions

- Conductor sizes: 20–16 AWG (0.5–1.5 mm²)
- Push-in termination of solid conductors
- Connections for top-entry (vertical) and/or side-entry (horizontal) wiring



WINSTA® MINI – For Pluggable Connections

- Various coding options for power and control lines
- Easy replacement of LED drivers and light engines
- Compact pluggable connectors: 4.4 mm pole spacing

FIELD-WIRING TERMINAL BLOCKS

For LED Lights

Universal Field-Wiring Connection for All Conductor Types:

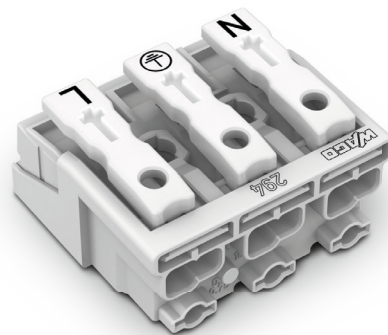
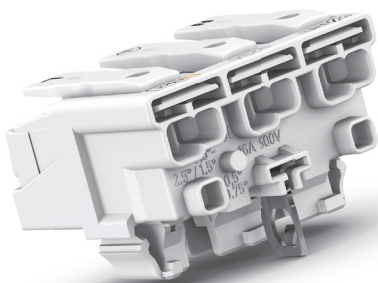
- Stranded and fine-stranded: 18–14 AWG (0.5–2.5 mm²)
- Solid: 18–12 AWG (0.5–2.5 mm²)
- Ground contact versions:
direct, screw-type and snap-in contact
- Snap-on type strain relief housings
can be retrofitted
- Standard strip lengths,
independent of cross-section

294 Series Linect – For Universal Light Connections

- 2- to 5-pole configurations for
all connection types:
 - Pluggable installation, e.g.,
via WINSTA® Linect® T-Connector
 - Conventional installation via pluggable
Linect® Light Connection
 - Conventional installation directly
at the lighting connector
- Streamlined mounting via Linect® snap-in foot
- Uniform coding and printing for mains,
emergency lighting and dimming

294 Series – For Universal Field-Wiring Connections

- 2- to 7-pole configurations
- Versions available with fixing holes or
snap-in mounting feet
- Third contact at bottom up to 0.75 mm²
- Custom printing available, e.g., for mains,
emergency lighting and dimming



WAGO Kontakttechnik GmbH & Co. KG

Postfach 2880 · 32385 Minden
Hansastraße 27 · 32423 Minden
info@wago.com
www.wago.com

Headquarters	+49 571/887 - 0
Sales	+49 571/887 - 222
Order Service	+49 571/887 - 44 333
Fax	+49 571/887 - 844 1169

WAGO is a registered trademark of WAGO Verwaltungsgesellschaft mbH. Cover picture: iStock.com/Stefano Giammarco

"Copyright – WAGO Kontakttechnik GmbH & Co. KG – all rights reserved. The content and structure of the WAGO websites, catalogs, videos, and other WAGO media are subject to copyright. Distribution or modification to the contents of these pages and videos is prohibited. Furthermore, the content may neither be copied nor made available to third parties for commercial purposes. Also subject to copyright are the images and videos that were made available to WAGO Kontakttechnik GmbH & Co. KG by third parties."