

## LON Configurator

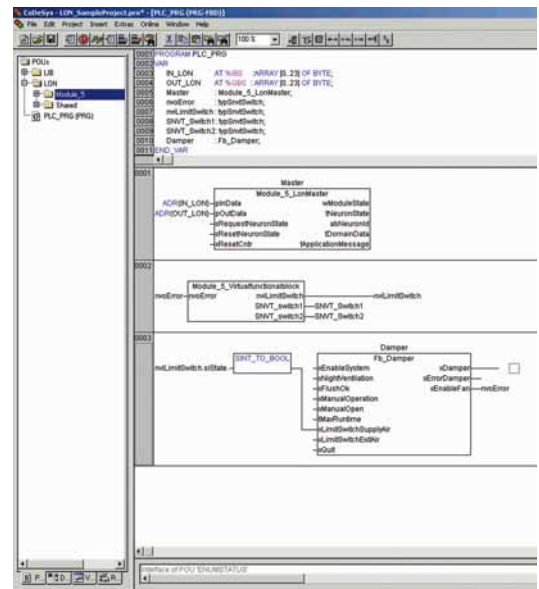
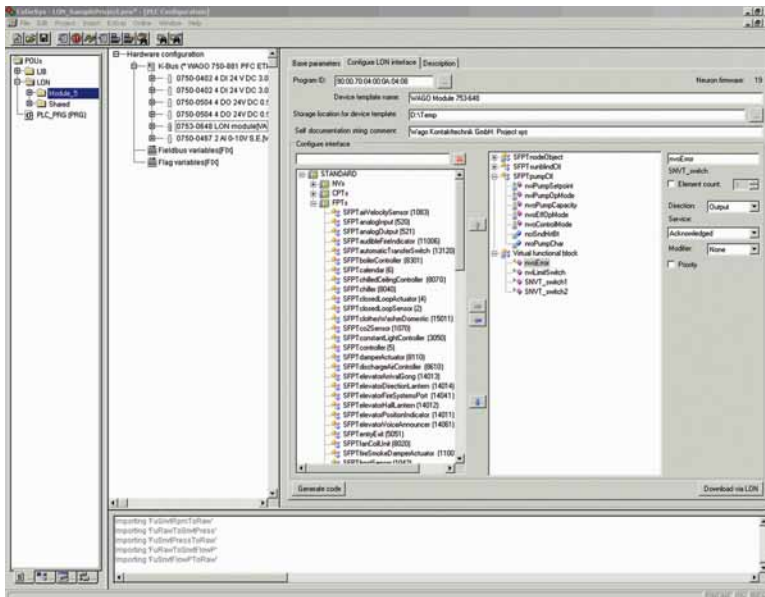
LON Configurator is an integral part of the WAGO-I/O-PRO IEC-61131-3 programming environment. The configurator supports both 753-648 LON Module's LonWorks network interface configuration and WAGO-I/O-PRO project integration. Network variables of any type can be defined. In addition to standard network variable types (SNVTs) and standard configuration property types (SCPTs), user-defined types (UNVTs/UCPTs) as well as LonMark functional profiles are also supported. Network variables are defined using the types and objects of the LonMark resources installed on your computer.

IEC-61131-3 function blocks are automatically created in the IEC application, simplifying operation. The function blocks represent the LON network interface in this application. When starting the control unit, both network variable interface and configuration data are automatically downloaded into the module.

An external interface file (XIF) is created for offline configuration in a network management tool.

### Features:

- Integral part of WAGO-I/O-PRO programming software
- Defines and implements a LON network interface
- Automatically generates IEC-61131-3 function blocks representing the LON network interface in the IEC application
- Downloads both network interfaces and configuration data when starting the control unit
- Generates XIF files
- Configuration check



LON Configurator is available as part of WAGO-I/O-PRO (Version 2.3.9.34 and higher)