

More Power no Longer Means More Space – WAGO’s New PCB Terminal Blocks for Power Electronics

A new line of PCB terminal blocks gives WAGO a comprehensive product portfolio that perfectly meets the needs of today’s power electronics. Combining compact design and a high current-carrying capacity with all the advantages of WAGO’s Push-in CAGE CLAMP® connection technology, WAGO’s new terminal blocks simplify wiring and maximize PCB design flexibility.

WAGO’s new power electronics portfolio includes six terminal block families. The new PCB terminal blocks accommodate 4 mm² (12 AWG), 6 mm² (10 AWG) and 16 mm² (4 AWG) conductors, are rated up to 1000 V/76 A and can be operated via operating tool or lever. They are equipped with Push-in CAGE CLAMP® technology for all conductor types, allowing solid and ferruled conductors to be simply pushed into the unit. The new terminal blocks terminate conductors both horizontally and vertically to the PCB. Furthermore, they can be tested both parallel and perpendicular to conductor entry.

Save Space on the PCB

The new blocks also offer a unique space-saving feature: Beyond their nominal cross-section, the PCB terminal blocks may connect solid and fine-stranded conductors up to the next larger cross-section size. This advantage saves space on the PCB and reduces device connection costs.

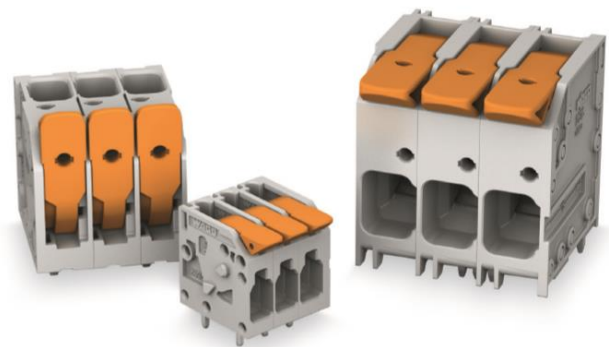
WAGO’s 2624, 2626 and 2636 Series PCB Terminal Blocks are ideal for space-restricted applications. Tool operation is performed parallel to conductor entry so that the clamping points can be easily reached – even if individual components are tightly packaged on the PCB. This makes these new 2624, 2626 and 2636 Series PCB Terminal Blocks ideal for compact device connections and panel feedthrough applications.

Easy-to-Use Lever

If sub-assemblies will be wired in the field before installation, highly accessible and simple-to-operate connection points are essential. To meet these



Tool operation is conveniently performed parallel to conductor entry for the 2624, 2626 and 2636 Series PCB Terminal Blocks. The blocks are perfect for both space-limited and panel feedthrough applications.



Ideal for field wiring: The lever on WAGO’s new 2604, 2606 and 2616 Series PCB Terminal Blocks provides both intuitive and tool-free operation.

requirements, WAGO developed the 2604, 2606 and 2616 Series PCB Terminal Blocks that enable intuitive and tool-free operation via lever

The blocks' lever is incredibly user-friendly because the respective latch positions (open/closed) can be clearly identified. When the clamping point is closed, the ease of movement becomes a tremendous advantage: the force of the open spring ensures that the lever closes – even at low force. This intelligent design always ensures a secure connection of the clamping point for all types of conductors, and virtually eliminates errors due to misuse.

WAGO's compact and high-performance PCB terminal blocks are not only easy to use, but also offer maximum wiring flexibility. Space-saving, easy-to-use and reliable, they are used globally in power electronics, including power supplies, frequency converters and servo drives