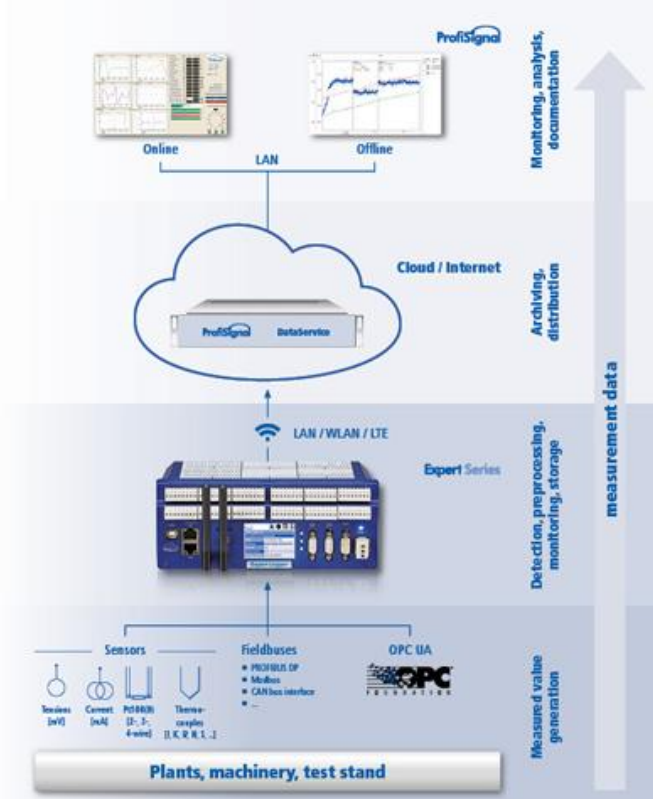




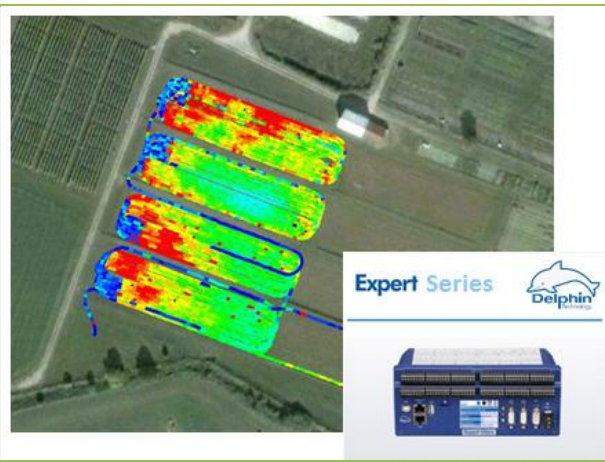
→ The **Expert series** and **ProfiSignal** software take your **machines and systems into the cloud**

- ❖ Precision and high-resolution data acquisition up to 50kHz/channel and datalogging to SD card (voltage, current, RTD or thermocouple, vibration, transients)
- ❖ Highly communicative at field level such as Profibus, Modbus RTU and TCP, and CAN.
- ❖ Connections to the cloud wirelessly via LTE or LAN/WLAN unsecured via VPN (online) and transferring offline measurement data using FTP, CIFS or NFS etc.
 - Online and offline measurement data access from the cloud using internet-connected PC and portray them in trend diagrams (online) or evaluate them using Profisignal software (offline)
- ❖ Expert devices can be optionally equipped with a OPC UA Client/Server interface



Ενδεικτικά: [ExpertLogger](#), [ProfiSignal](#)

→ **GPS reception** and **NTP time** synchronization with an integrated WWAN/4G module in the Expert Logger, Expert Transient or Expert Vibro devices



→ Sampling rates in **Expert Key** devices **up to 100kHz**.

The total sampling rate is the product of the highest set sampling frequency and the number of active analogue inputs. Increased sampling rates increase signal interference so that measurement precision decreases. The lower the sampling rate, the more exact the measurement.





→ **Application: Monitoring turbines/generators' vibration velocity** with vibration velocity sensors

Features:

- Monitoring of vibrations on hydroelectric turbines and air gaps
- Diagnosing damage in ship drives, bearings and shafts
- Acquisition and monitoring of combustion chamber vibrations in gas turbines
- Monitoring and signal evaluation in test stands
- Mobile system (measurement case) for vibration measurement technology on the go



Δείτε και πρόσθετα προϊόντα του Οίκου Delphin (με κλικ στην σχετική εικόνα)

ΛΟΙΠΕΣ ΣΥΣΚΕΥΕΣ - "PLC" DATA ACQUISITION

Expert Logger

Stand alone data logger



ProfiMessage

Modular measurement



Expert Vibro

Vibration measurement



Expert Key

PC-based measurement technology

